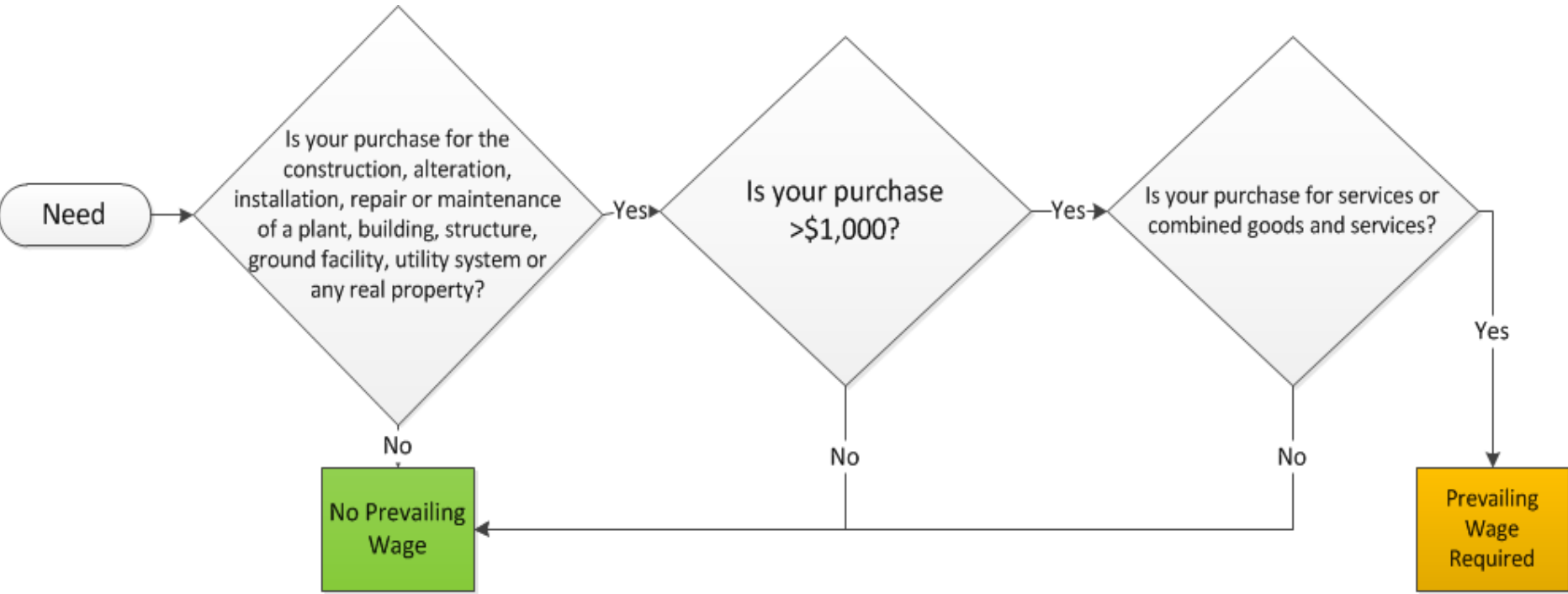




# Prevailing Wage Decision Tree



Exception 1: Janitorial or custodial services of a routine, recurring or usual nature

Exception 2: Protection of the sort provided by guards, watchmen, or other security forces

Exception 3: Landscape maintenance work by "sheltered workshops," where "sheltered workshops" are nonprofit organizations licensed by the Chief of DLSE employing mentally and/or physically handicapped workers